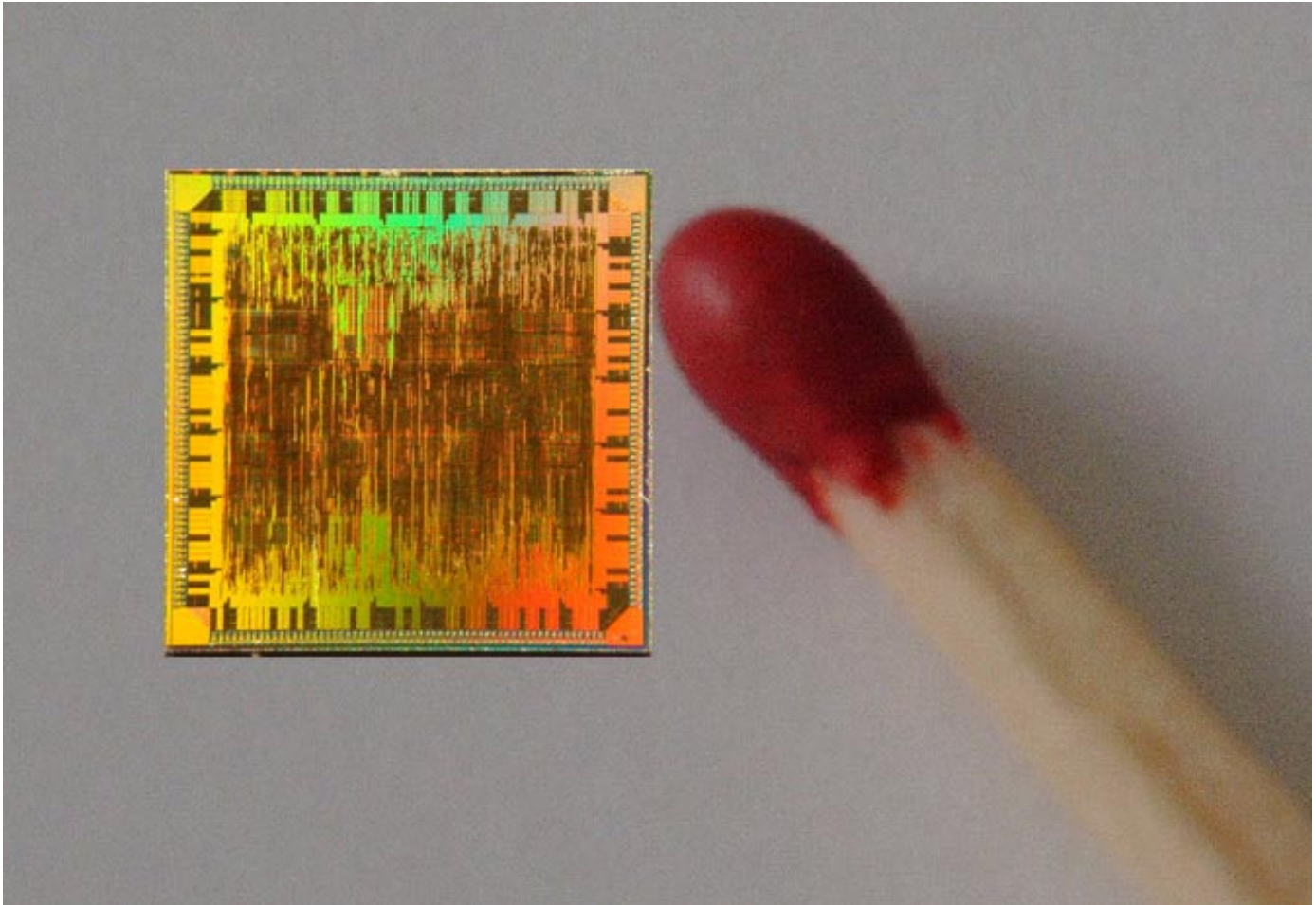
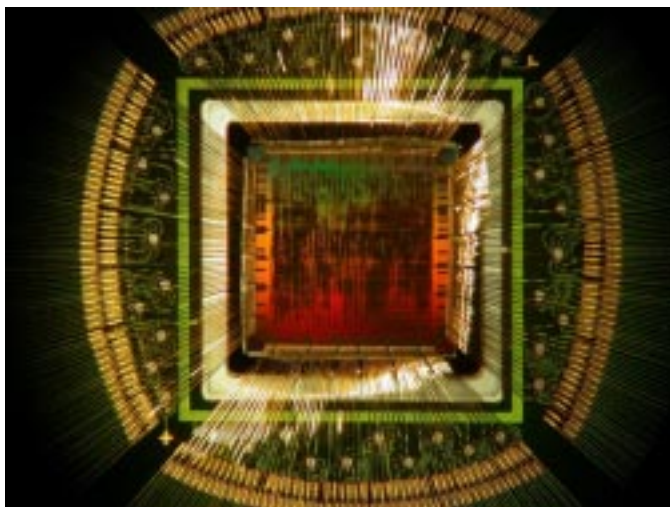


the ATOLL chip

a network on a chip



DIE photo of the 5,7 x 5,7 ATOLL chip



bonding of the ATOLL chip

The chip features:

- 5.7 x 5.7 die size
- 4.5 Mio. Transistors in 0.18 μm technology
- 250MHz typical clock frequency
- power consumption of only 5W
- 440 staggered I/O pads
- 520 ball custom BGA package
- custom I/O cells for PCI-X
- custom LVDS with integrated termination resistors
- PCI-X high speed bus interface (64bit @ 133MHz)
- 4 byte-wide bidirectional LVDS links
- 2GBytes/s interconnection network bandwidth